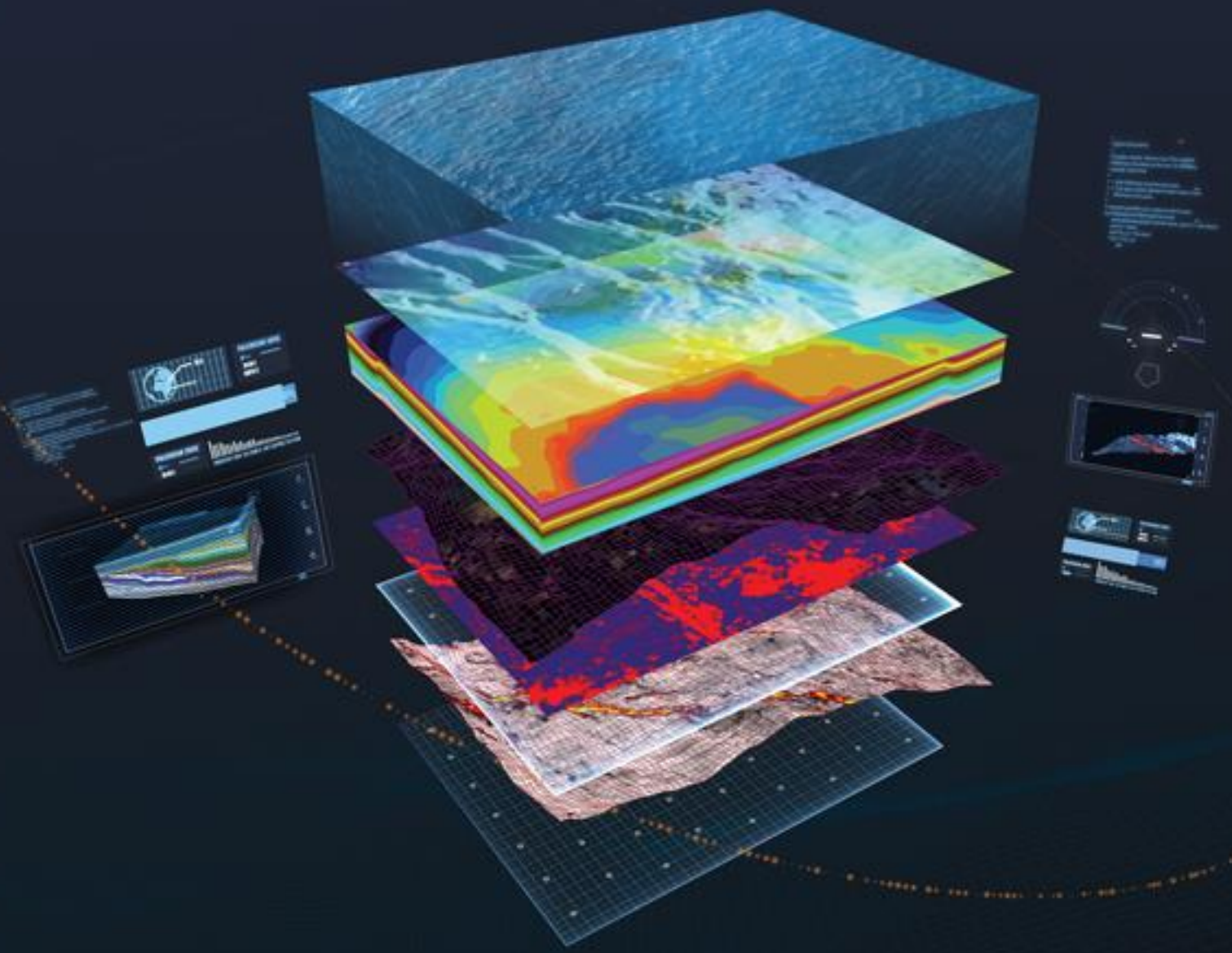


PALEOSCAN™ 2020

Dongle Key Licence

Installation Procedure



Global Seismic Interpretation Software



ELIIS S.A.S.

3, rue Jean Monnet
34830 Clapiers
FRANCE

Web: www.eliis.fr
email: support@eliis.fr

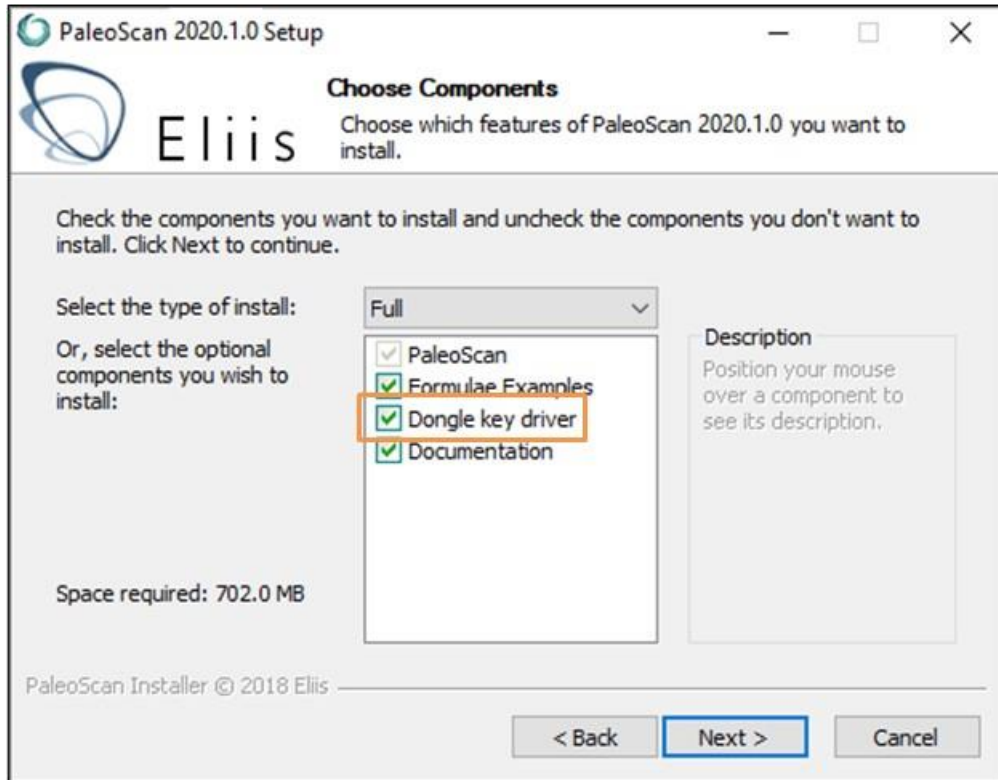
Tel.: +33 (0) 4.67.41.31.16
Support: +33 (0) 4.30.96.61.33

Table of Contents

I. Installing the FlexNet dongle key driver	4
II. Plug in the FlexNet USB Dongle Key	4
III. Activation	5
1. Select the dongle key license from PaleoScan™	6
2. Start PaleoScan™	9
a. If local server value is set to No.....	9
b. If local server value is set to Yes.....	9
IV. Common issues	11
1. The local license server does not start.....	11
a. Define a custom port	11
b. Another server is running	11
2. The dongle key is not detected.....	11
a. Drivers are missing	11

I. Installing the FlexNet dongle key driver

The dongle key drivers are included inside the PaleoScan™ setup package. During the installation process, the **Dongle key driver** must be checked.



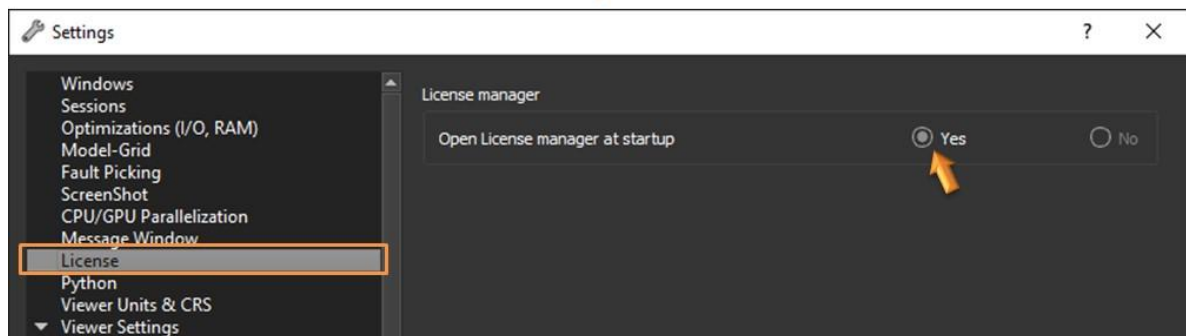
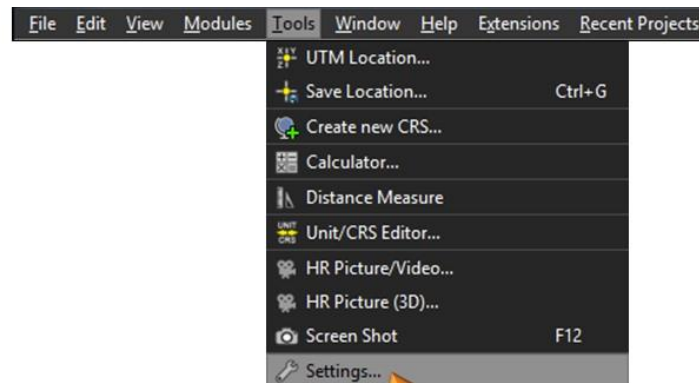
II. Plug in the FlexNet USB Dongle Key

Now you have installed the FlexNet dongle key driver, please plug in the FlexNet USB dongle key into your computer.

III. Activation

At this stage, it is assumed that a valid license file has been received from the Eliis team.

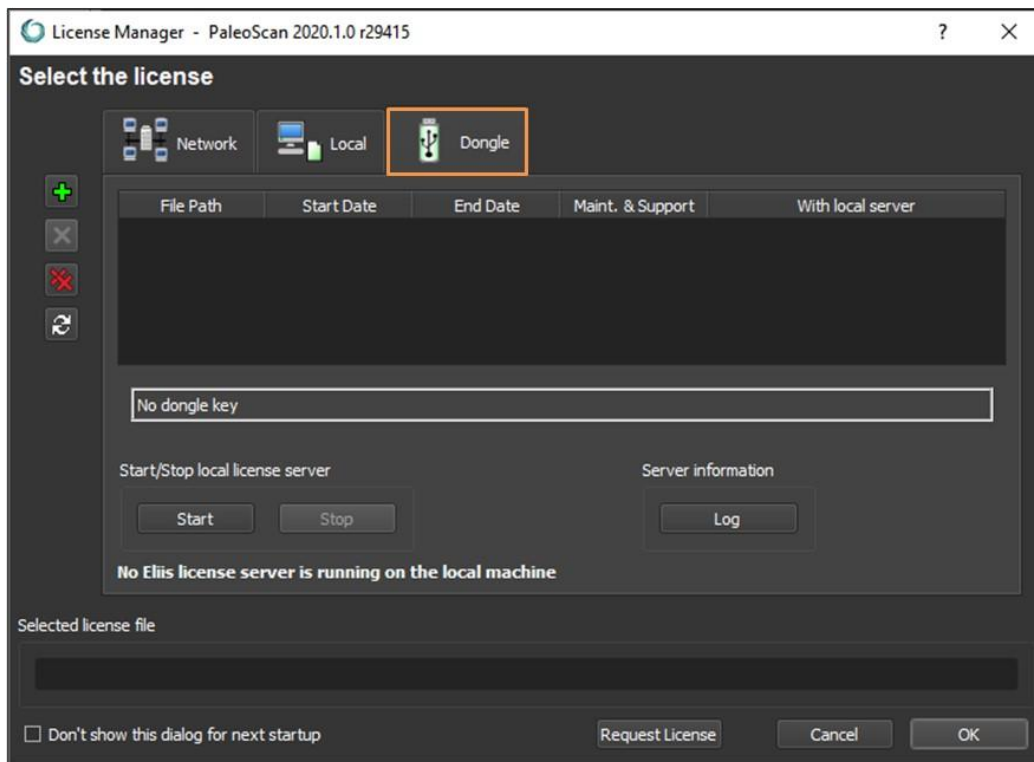
- Open PaleoScan™, the License Manager should appear. If the License Manager does not present itself, the user must force its opening from the PaleoScan™ settings:
 - From the PaleoScan™ **Tools** file menu, go to **Settings** and click on the **License** section. Finally check the option **Open License Manager at start-up**:



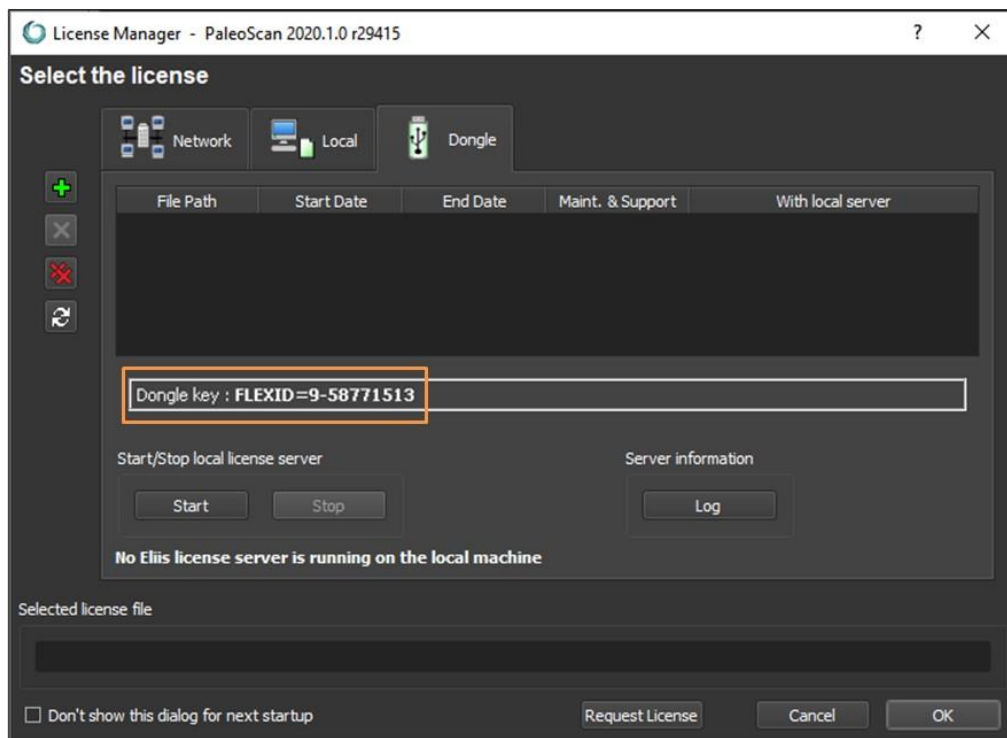
- Close PaleoScan™ and restart the software. The License Manager should present itself.


1. Select the dongle key license from PaleoScan™

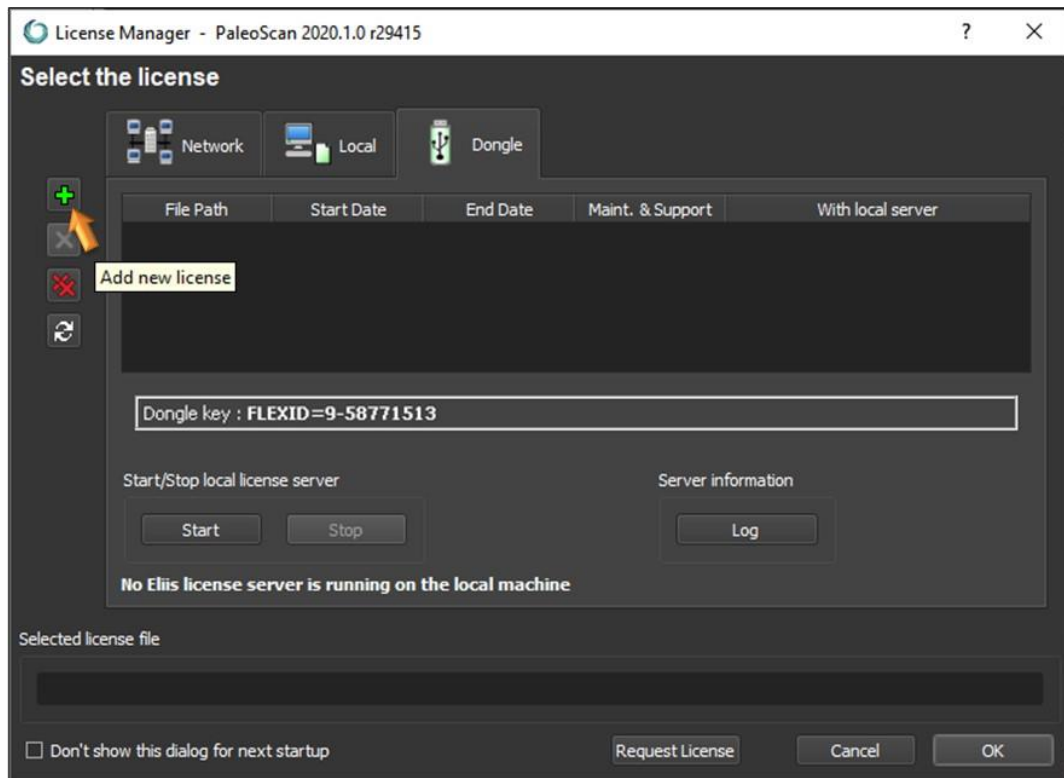
- Select the **Dongle** tab.



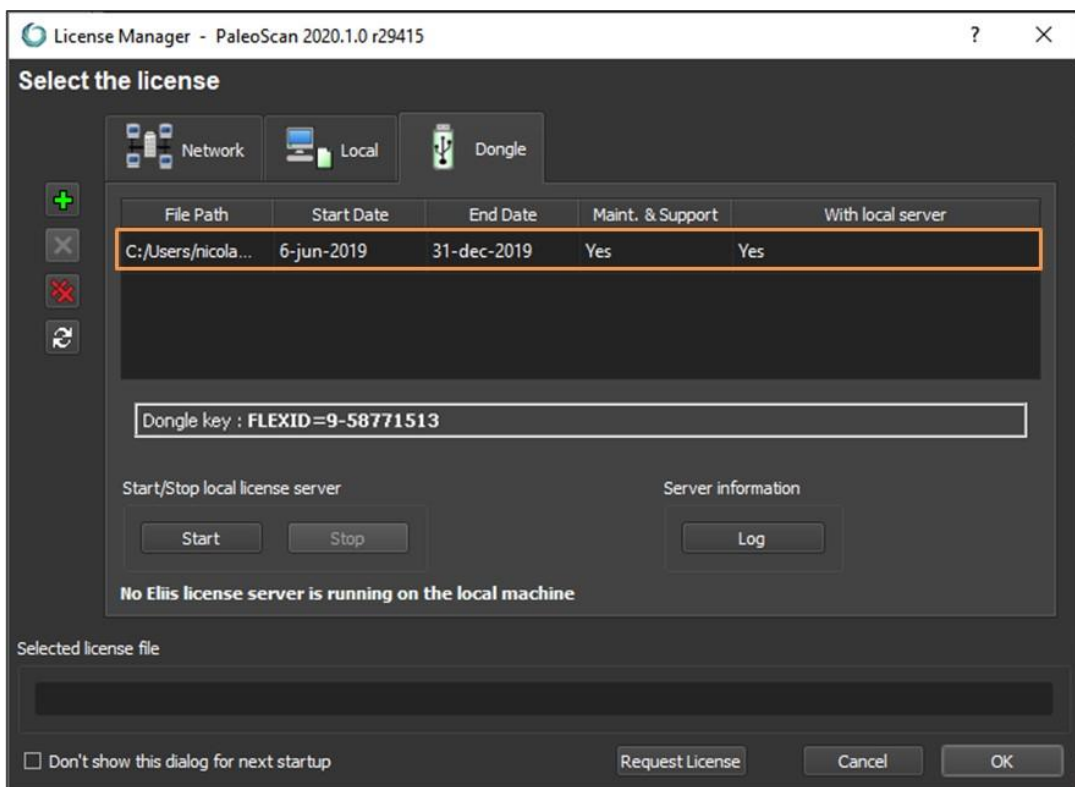
- If the dongle key has not been inserted yet, plug it. The dongle key ID must be displayed. If not, please check the [chapter IV. Common issues](#).



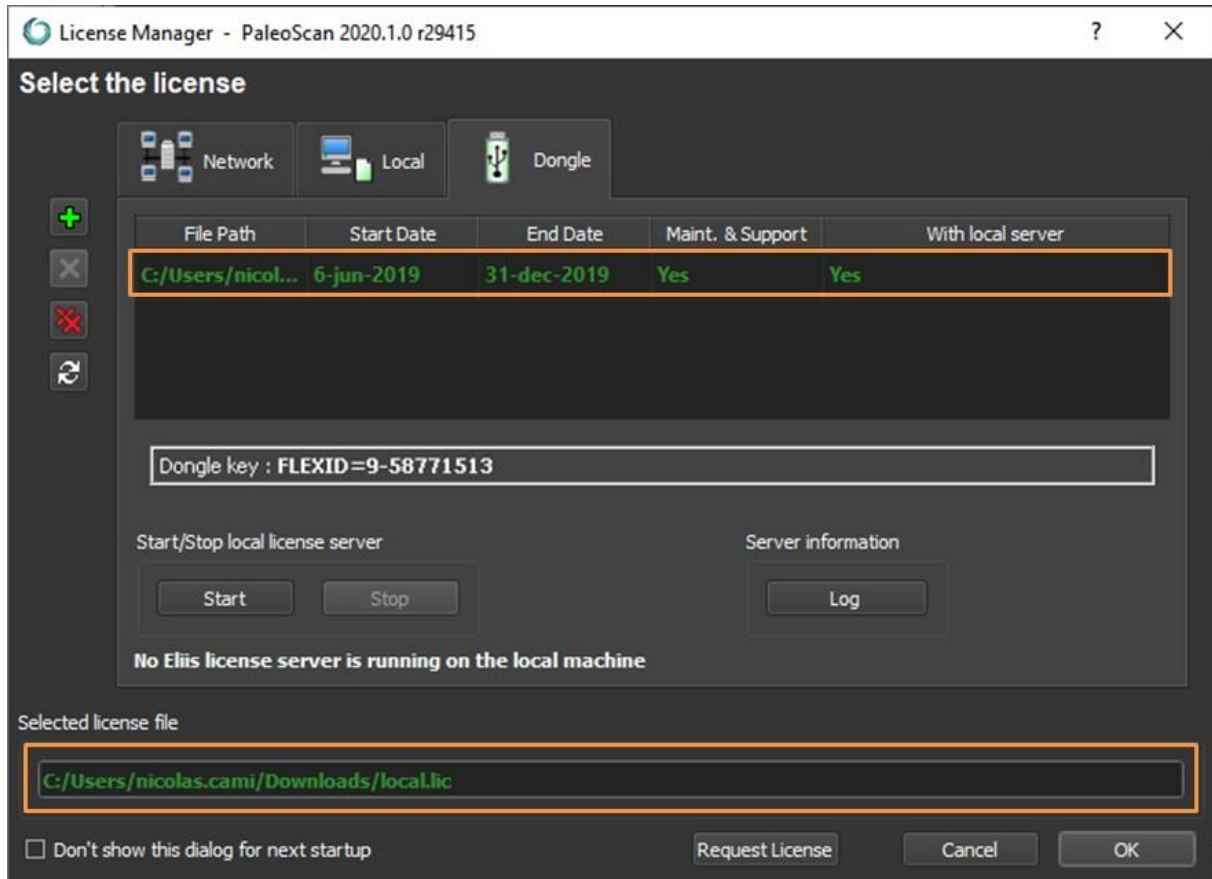
- Select the dongle license file using the  icon called **Add new license**:



- If the selected license is valid, a new row displaying the license details is inserted inside the license file list:



- Once the license file is displayed in the license list, it must be selected by double clicking on it:



2. Start PaleoScan™

Depending on the local license type, a local server may have to be run.

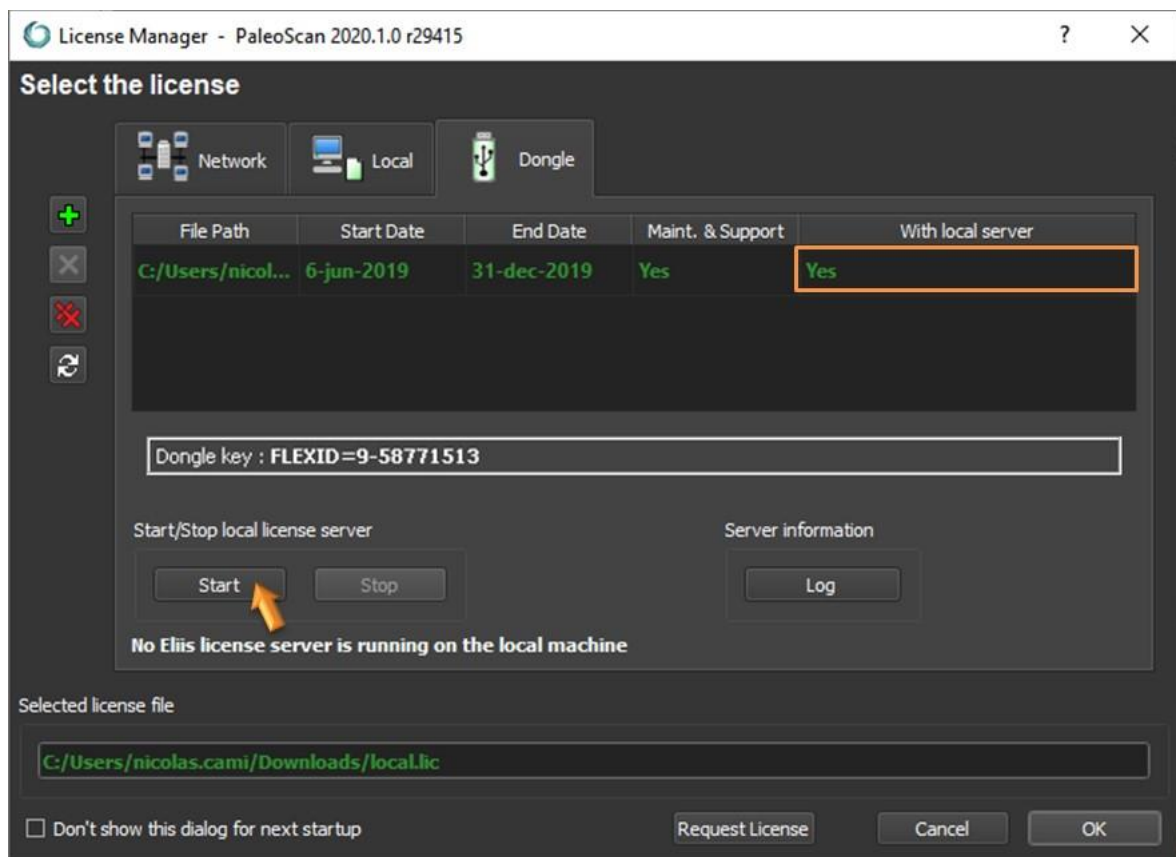
This information is displayed in the column named **with local server** from the license list table.

a. If local server value is set to No

- No local server is required: Click on the **OK** button to start the software using the selected license.

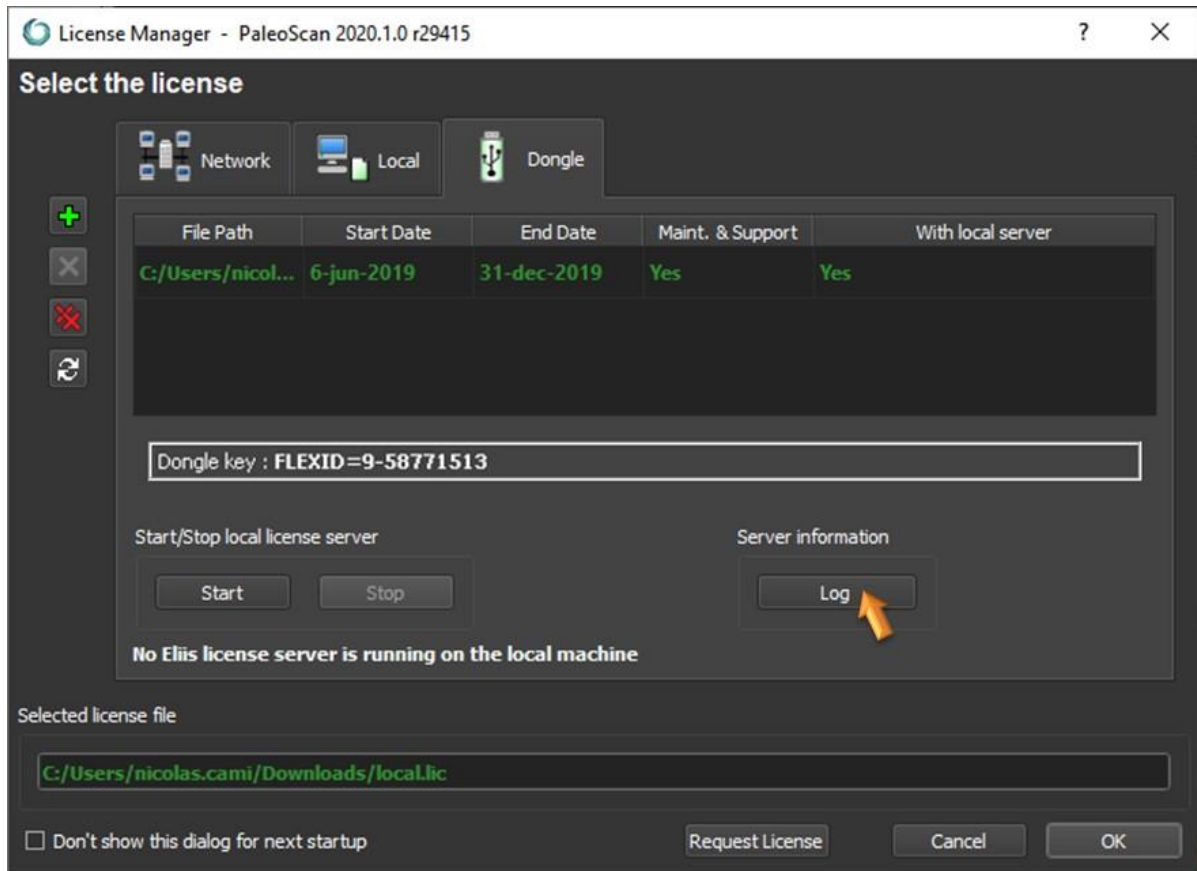
b. If local server value is set to Yes

- A local server is required: If no local server is running (message *No Eliis license server is running on the local machine* is shown), click on the **Start** button:



- The local server state message must have been updated to ***Eliis license server is running.***
- Click on the **OK** button to start the software using the selected license.

Remark: If the local server does not start, please read the [common issues](#) chapter. The server log file may also help. Click on the **Log** button to open it:



Note: Activation may require administration rights.

IV. Common issues

1. The local license server does not start

a. Define a custom port

If there are other software based on Flexera software licensing system running on the machine, there may be some ports conflict. To avoid such issue, edit the license file and specify a custom (unused) port number (from 27000-27009):

```
SERVER alpha 50eeeeeeeeee 27005  
VENDOR eliis  
FEATURE [...]
```

b. Another server is running

There may be unexpected `lmgrd.exe` processes or `eliis.exe` running. Close PaleoScan™, kill all **lmgrd.exe** processes and restart the local license server.

2. The dongle key is not detected

a. Drivers are missing

Check that the file named **haspsrm_win64.dll** is inside the **System32** folder inside your Windows directory. If not, please try to copy it manually. An instance of the file is available in the PaleoScan™ installation folder.

If the folder is read-only, it is possible to force Windows to use the DLL located in the PaleoScan™ folder by specifying its path inside the Windows users environment variable named **FLEXID_LIBRARY_PATH**.